

Educosoft Fall Release 2020

This Fall 2020, Educosoft has completed and released its Sign-Sign-On Integration project with a popular Learning Management System D2L from Brightspace.

With this release

- Students in D2L can register on Educosoft directly from their D2L page.
- Registration establishes a seamless class to class single-sign-on access between D2L and Educosoft
- The single-sign-on feature also streamlines instructor's access to both the platforms.
- The integration allows Instructor to import gradebook and students' scores onto D2L, eliminating a painstaking manual data entry process.

Features:

1. Students logging into Educosoft from D2L page.

The screenshot shows the D2L interface for 'educosoft Course 10'. In the top navigation bar, there are icons for a grid, chat, and a notification bell, along with a user profile for 'U7 user 75'. Below the navigation bar, the 'Special Link' menu is open, and the 'Educosoft' link is highlighted with a red arrow. The main content area shows an 'Activity Feed' with the message 'There's nothing here just yet.' and a sidebar with 'Latest Posts'.

2. Instructor: Import grade report to D2L from Educosoft

2. a: Exporting grade report from Educosoft

The screenshot shows the Educosoft instructor interface. The 'Assessments' menu is open, and the 'Export Grade for D2L' option is highlighted with a red box. Below the menu, a table displays student grades across various assessment categories. The 'EXPORT EXCEL' button is also highlighted with a red box. A red arrow points to the 'End of Line Indicator' column.

OrgDefinedId	Username	Final Points Grade <CategoryWeight:20>	Homework Points Grade <CategoryWeight:10>	Midterm Points Grade <CategoryWeight:20>	Quiz Points Grade <CategoryWeight:15>	Test Points Grade <CategoryWeight:35>	Adjusted Final Grade Numerator	Adjusted Final Grade Denominator	End of Line Indicator
#educosoft.S1	#educosoft.S1	74.29	94.42	57.14	90.36	78.61	77	100	#
#educosoft.S2	#educosoft.S2	82.86	77.66	97.14	79.83	91.39	88	100	#
#educosoft.S3	#educosoft.S3	80	99.05	65.71	89.44	83.61	82	100	#
#educosoft.S4	#educosoft.S4	91.43	100	97.14	92.28	96.39	95	100	#
#educosoft.S5	#educosoft.S5	77.14	72.93	42.86	75.53	73.43	68	100	#
#Educo.Langston101	#Enk,Winn	0	15.86	0	15.47	16.67	10	100	#

Class_Grades_Impo...csv

2. b: Importing Edusoft Grade Report to D2L

brightspace | edusoft Course 1

Content External Learning Tools (LTI) Assessments Course Tools Special Link Edusoft Access

Enter Grades Manage Grades Schemes Setup Wizard

Import Export Switch to Spreadsheet View More Actions

Search For... Show Search Options

Last Name, First Name	Final Grades						Final Grades	
	Final Calculated Grade	Final	Homework	Midterm	Quiz	Test	Final Calculated Grade	Final Adjusted Grade
Student, edusoft	78.96 %	74.29 %	94.42 %	57.14 %	90.36 %	78.61 %	78.96 %	77 %
Student, edusoft	85.78 %	82.86 %	77.66 %	97.14 %	79.83 %	91.39 %	85.78 %	88 %
Student, edusoft	83.56 %	80 %	99.05 %	65.71 %	89.44 %	83.61 %	83.56 %	82 %
Student, edusoft	95.45 %	91.43 %	100 %	97.14 %	92.28 %	96.39 %	95.45 %	95 %
Student, edusoft	68.38 %	77.14 %	72.93 %	42.86 %	75.53 %	73.43 %	68.38 %	68 %

3. Late Submission Penalty option for Quiz and Test Assessment

3.a: Assessment creation with penalty score

Add Assessment

Add New Assessment

Assessment Type: Online

Title: Basic Math 1.1

Recipients: All Students

Select assessment mode (based on predefined setting or custom settings): Standard mode (predefined settings) - Test MC

Category: Test

Maximum Attempts: 1

Weight: 1

Assessment to be taken: On the selected Date 06/23/2020

Keep assessment active after due date till: 6/30/2020

Penalty for late submission: 35 %

Can take from: Anywhere

Generate study plan: Check to enable and save study plan settings for the test

Score Settings: Replace selected assessment score obtained in this assessment if selected assessment scores are lower than the score in this assessment

Lockdown browser setting: Yes, Enable for lockdown browser

Buttons: Continue, Cancel

3.b: Student Result Page (Student took assessment after due date)

Results

Attempt: Attempt 1

Title: Basic Math 1.1 Quiz

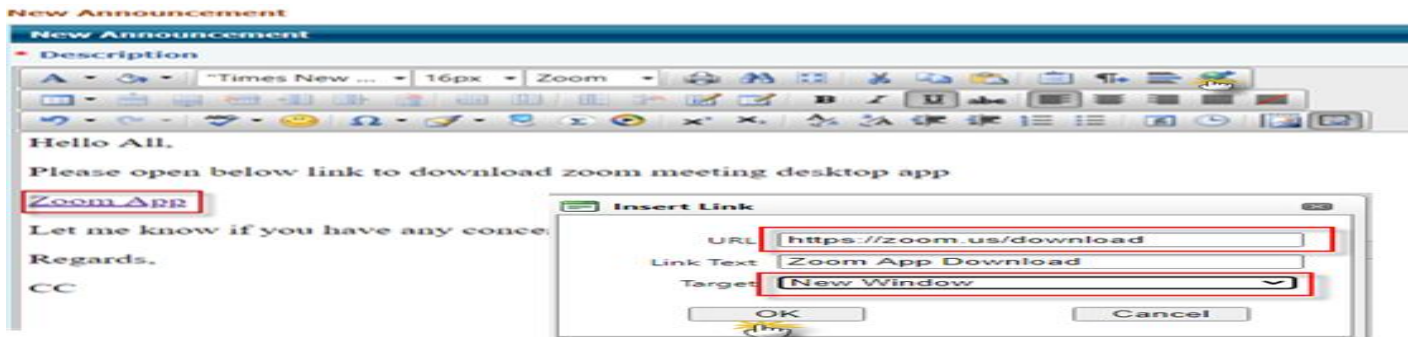
Student name: 90 stu

Result Summary

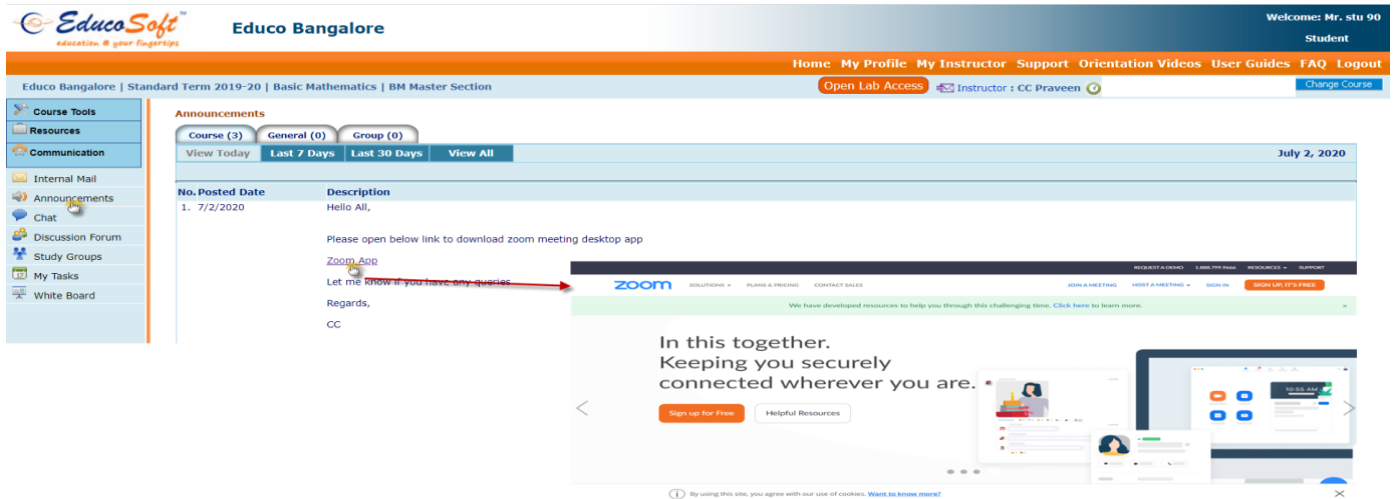
Total number of questions	10	Your Score	8
Number of questions with solution (Not Counted)	0	Max Score	10
Total number of questions counted	10	Percent Score	52.0 %
Number of questions attempted	10		
Number of counted questions answered correctly	8		
Time taken	3 Min.	As the assessment has been taken after it is expired a penalty of 35% is applied against your score.	
Taken on	6/24/2020		

4. Hyperlink Option in Announcement tools

4.a.: Insert link tool helps user in inserting important links to an announcement

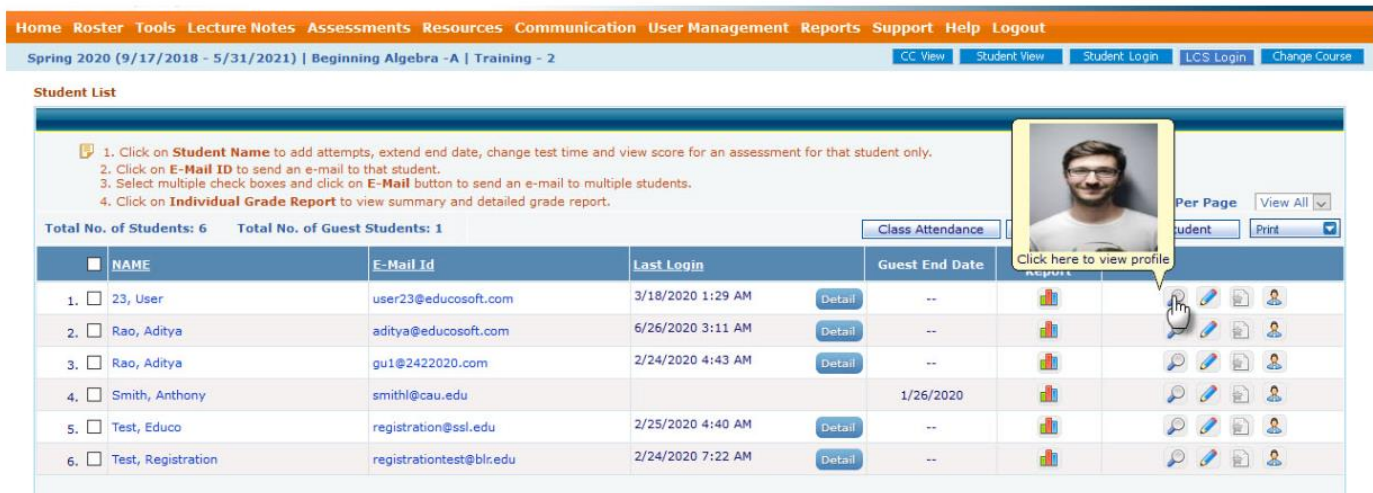


4.b. Student Announcement



5. View Student Profile photo from Instructor roster

Mouse hover on view profile link to view student profile photo



Instructor can view student profile picture by taking mouse over View profile link.